

HOW TO CHANGE THE SWING SEAT



hold the pin with pliers



**using a 17mm spanner
slacken the nut**



twist nut off anti-clockwise



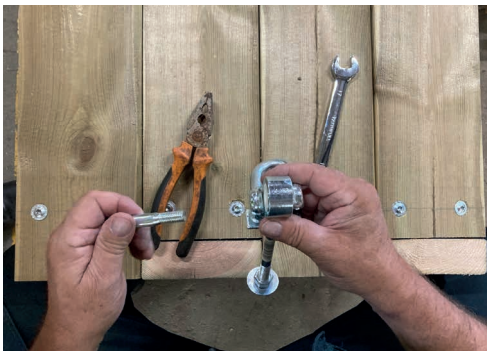
take nut off



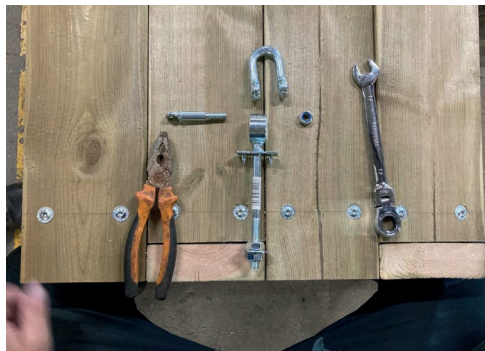
untwist the pin using pliers



untwist the pin by hand



take pin out



add swing seat to D shackle

HOW TO PUT BACK TOGETHER AGAIN



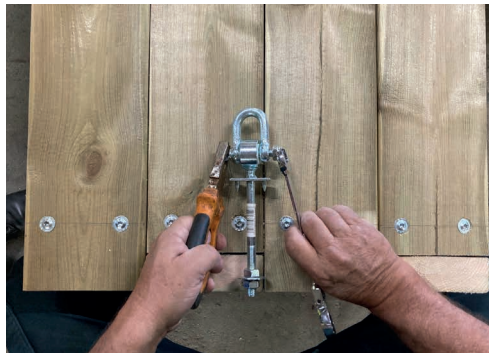
put pin back in



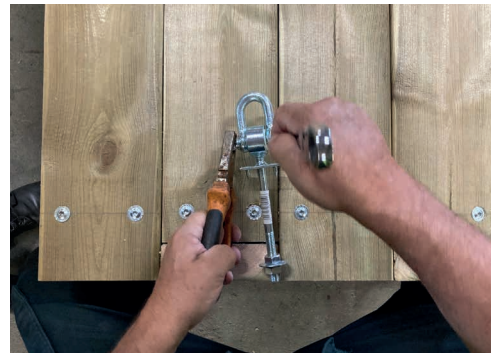
tighten pin by hand



**holding pin with pliers
put nut back on**



hold nut with spanner



tighten it all up

Any questions call 01577 840 570 or email info@caledoniaplay.com